



**Complete
Instrumentation Solutions**
Complete Instrumentation Solutions Pvt Ltd
Suite : 508 , Suncity Business Towers
Golf Course Road , Sector - 54
Gurgaon - 121002 , Haryana , India

**MiniReflecto RL+Qd
road marking retroreflectometer.**



**E A S Y L U X
RETROREFLECTOMETER**

Change your way of work.

It does not seem possible. That a retroreflectorimeter with - smartphone interface, fast and efficient processor powered by AA-size batteries, sensors for temperature, humidity and inclination, external light suppression, opened measurement area, user removable SDCard, color sun readable LCD, touch screen, LED technology, airplane carry-on luggage carrying case, LOG facilities, configurable timer, special optics for 15 mm profiled road markings, GPS, Bluetooth, IrDa, RFid - could be so light and small. But it is.

In fact no other retroreflectorimeter can match the size, the design, the performance and the weight of the new MiniReflecto....It simply can not be done.



Mini Retroreflectorimeters
All MiniReflecto are powered by rechargeable AA-size batteries.

Creating an entirely new design meant inventing entirely new technology.

Easylux holds the most advanced handheld solution for accurately measures the retroreflectance of road markings, road studs, traffic signs and safety clothing.

We clearly realized how unsafe and unsuitable big and heavy instruments are for road visibility control.

The patented MiniReflecto family is a turning point for the face of the standard retroreflectorimeters.

It is time to leave the big, heavy dinosaurs of retroreflectorimeters in the past.



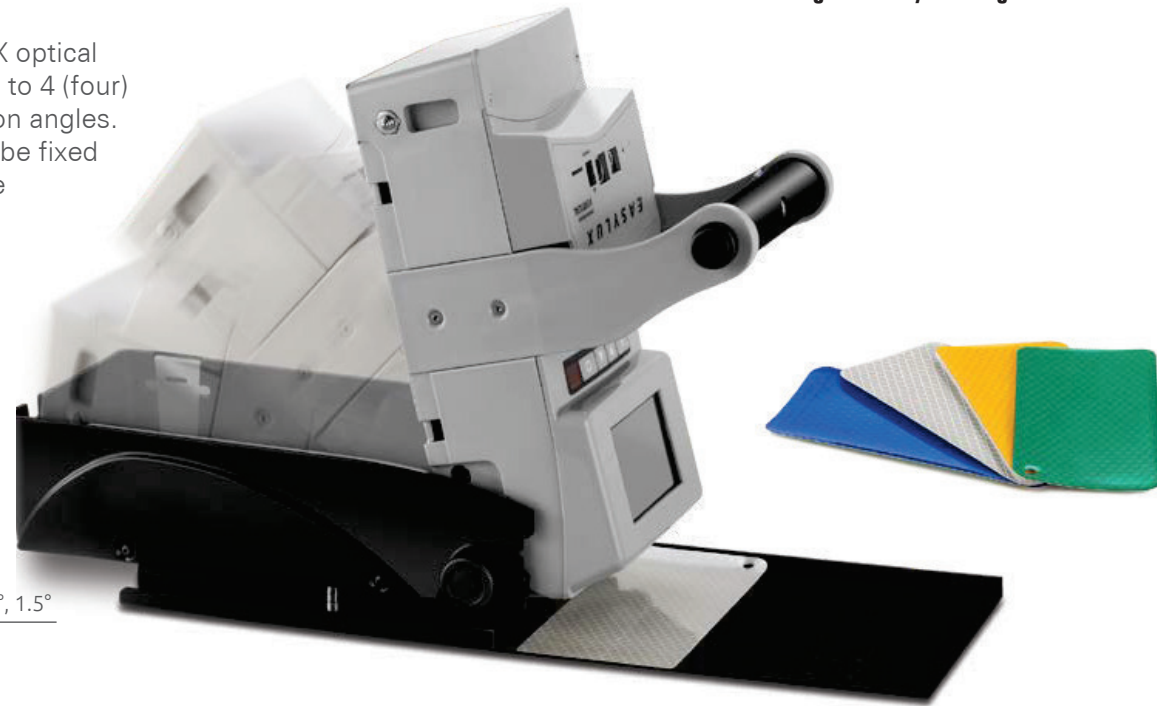
Road studs retroreflectorimeter
Exclusive dual angle geometry
0.2° (0.33°) and 1.0° simultaneously.

ASTM E1696	0.2° / 1°
EN 1463	0.3° / 1°

Road sign Safety Clothing

The innovative EASYLUX optical system can measure up to 4 (four) simultaneous observation angles. The entrance angle can be fixed at -4° ($+5^\circ$) or it can be continuously adjusted.

ASTM E1709	0.2°
ASTM E2540	0.5°
EN 12899-1	0.33°
ISO 20471	0.2°, 0.33°, 1.0°, 1.5°



Road Sign retroreflectometer

Exclusive 4 simultaneous observation angles in one compact instrument for full compliance with **ISO 20471 - High visibility clothing**.

Road marking

CEN 30-meter geometry.

15-meter geometry.

50-meter geometry.



Test Certificate No. 0913-2014-04

Our innovative technology was certified by StrAusZert independent laboratory.

Road marking retroreflectometer

Measures the night visibility **R_L**, the day visibility **Q_d**, the visibility under wet conditions **R_{L wet}** and under continuous wetting conditions **R_{L rain}** of all types and colors of road markings.

EN1436	RL Qd
ASTM E1710	RL
ASTM E2302	Qd
ASTM E2177	RL wet
ASTM E2832	RL rain



External Beam Retroreflectometer.

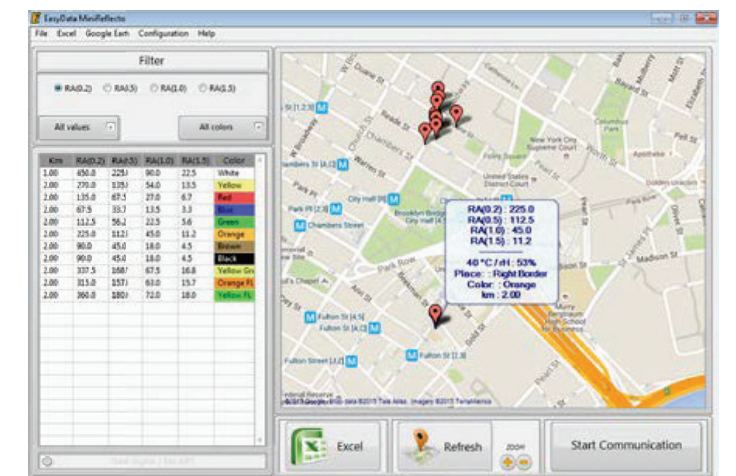
The exclusive external light suppression technology allows free access to the measurement area for **R_{L rain}** compatibility.





Android interface:

- Remote screen.
- Measurements.
- Share Data.
- Take Pictures.



Easydata is a free software tool developed to manage measured figures of all Easylux retroreflectometers.

- Filter data by value and color.
- Generate Excel measurements reports.
- Generate Google Earth KML reports.
- Display measured points on the map.



Portability

Carrying a **road marking retroreflectometer** in a backpack opens new business possibilities.



**Continuous wetting
compatible technology.**

ASTM E2832 R_{L-2}
EN 1436

LOG DATABASE

- Road Name;
- Milestone mark;
- Operator's name;
- Direction (north, south, east, west);
- Material (paint, thermoplastic, prismatic, ...);
- Color;
- Place (left border, center line, etc.);
- Free notes (dusty, wet, sectioned, ...)



Dynamic Retroreflectometer

The **Easylux Dynamic** is a LED technology highway continuous retroreflectometer for road markings.

The LED system makes the instrument almost maintenance-free and eliminates the periodic replacement of light bulbs of old-technology devices.

Measures the retroreflectivity R_L of all colors and types of road markings with 30-meter geometry and records and classify all road studs.

Easylux Dynamic retroreflectometer complies with ASTM E1710, EN1436 and works at normal traffic speed (120 km/h) under any lighting conditions - day time or night time.



Dynamic retroreflectometer wireless remote tablet:

- Video overlay with position indicator.
- R_L progression chart.
- Real time value and average chart.
- Pre-programmed messages.



Dynamic

CEN 30-meter geometry:

- 88.76° / 1.05° (ASTM E1710)
- 1.24° / 2.29° (EN1436)

15-meter geometry available.

Picture of a 15-meter (86.5° / 1.5°) dynamic retroreflectometer.



Complete Instrumentation Solutions

Complete Instrumentation Solutions Pvt Ltd
Suite : 508 , Suncity Business Towers
Golf Course Road , Sector - 54
Gurgaon - 121002 , Haryana , India

15 mm

Profiled road markings
with no adjustments.