

LG -1 GALILEO LAND GRAVITY METER



- Lightweight rugged detector with fully quartz core**
- Worldwide measuring range**
- Repeatability better than 5 μ Gal**
- Precise drift and temperature compensation**
- Quick leveling system**
- Wide range of ambient operation conditions**
- Hot-swappable Li-Ion cells (30 hours at 25°C)**
- Detachable control unit with colour graphic display**
- Easy control system**
- Large data memory (8 GB)**
- Bluetooth connection, built-in GPS receiver**
- USB data download to flash disk or to PC**



Applications:

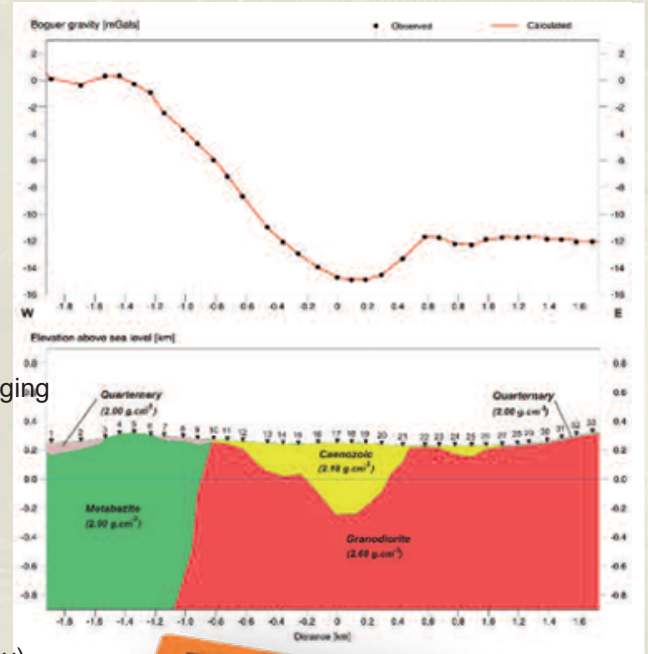
Oil & gas and mineral exploration, geological mapping, water management, civil engineering and geotechnical investigation, detection of cavities, archaeological studies.

Land Gravity Meter LG-1 Galileo

offered as a new product of GF Instruments is ready to match all needs of up-to-date field gravity survey. Its shock resistance by a lightweight sensor based on temperature balanced quartz core. Stable measuring features are completed with advanced technology of signal processing. The detachable control unit allows to adjust the leveling and to observe the data quality during measurement. Significant cost effectivity (purchase, operational and service expenses), together with traditional resourceful consulting, make LG-1 another useful family member of geophysical measuring tools made by GF Instruments.

Technical Specifications

- Operating range: 10000 mGal
 - Repeatability: better than 5 μ Gal
 - Reading: 0.1 μ Gal
 - resolution: Sensor 10 Hz
 - sampling rate: 10 s to 10 min
 - Acquisition time: tilts, drift, temperature
 - Built-in: -20 to +45°C, dust and rain protection
 - corrections: 2 pcs hot-swappable Li-Ion battery
 - Ambient conditions: Power AC Adapter or 12 V car socket recharging
 - supply: 23.5 x 21 x 35 cm
 - Dimensions: 5.8 kg (with batteries)
 - Weight: 70 x 36 x 53 cm
 - Transport case:
- Control unit with joy-stick user-friendly operation
 - Display: LCD transfective
 - Memory: 8 GB
 - GPS: SiRF Star IV technology (3 m accuracy)
 - Connectivity: Bluetooth with measuring unit
USB with PC and with flash disk
 - Power supply: Li-Ion battery (5.2 Ah) or 6 AA cells
AC adapter or 12 V car socket recharging



Standard accessories:

- Probe with tripod
- Control unit with carry belt
- 2 pcs of chargers
- 2 pcs of 12 V car socket supply cables
- Holder for 6 AA cells
- USB cable
- Operation manual
- Transport case

Optional Accessories:

- Set of Li-Ion cells (for probe and control unit) with chargers