

AI-Based Railway Inspection System

Multifunctional, 3D Laser and AI-Based Track Component Inventory and Inspection Solution

- Geometry and component inspection

- Operates at speeds up to 120 kmh (74 mph)

- Run over run change detection capability

- 3.5m (11.5ft) wide scan gives a full view of track

- Optional autonomous data acquisition and processing

- Installed on hi-rail or rail-bound vehicles



Eddyfi
Technologies

Automated Vision Systems

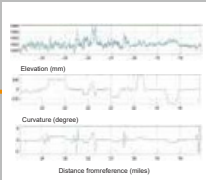
Railmetrics

AI-Based Railway Inspection System

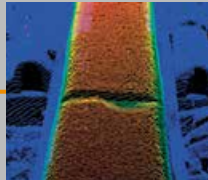
LRAIL

Rail

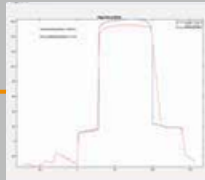
Geog (mm)



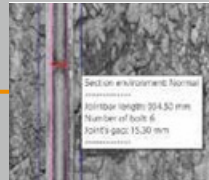
Track Geometry



Rail Surface Defect



Rail Wear (Top/Side)

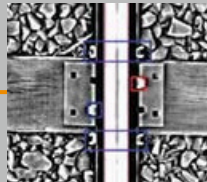


Joint Bar Inventory

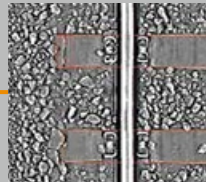
Ties & Fasteners



Elastic Fastener Inspection



Spike & Anchor Inspection

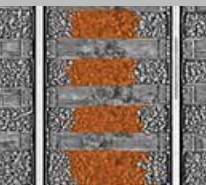


Concrete Tie Grading

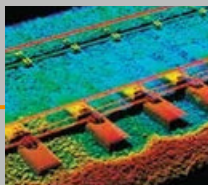


Wood Tie Grading

Ballast

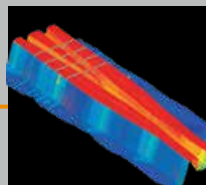


Surface Fouling



Profile and Deficiency

Fixed Assets



Turnout Inspection

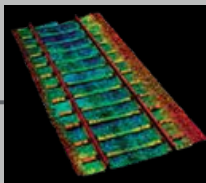


Road Crossing

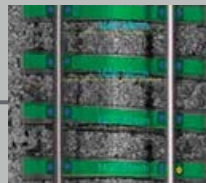
Non-Proprietary Output Files



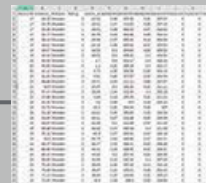
Geodatabase SHP Files



LAS Point Cloud



JPG Files



CSV Report