

CodedRADAR

LYNX



ADVANCED SURFACE + SUBSURFACE IMAGING

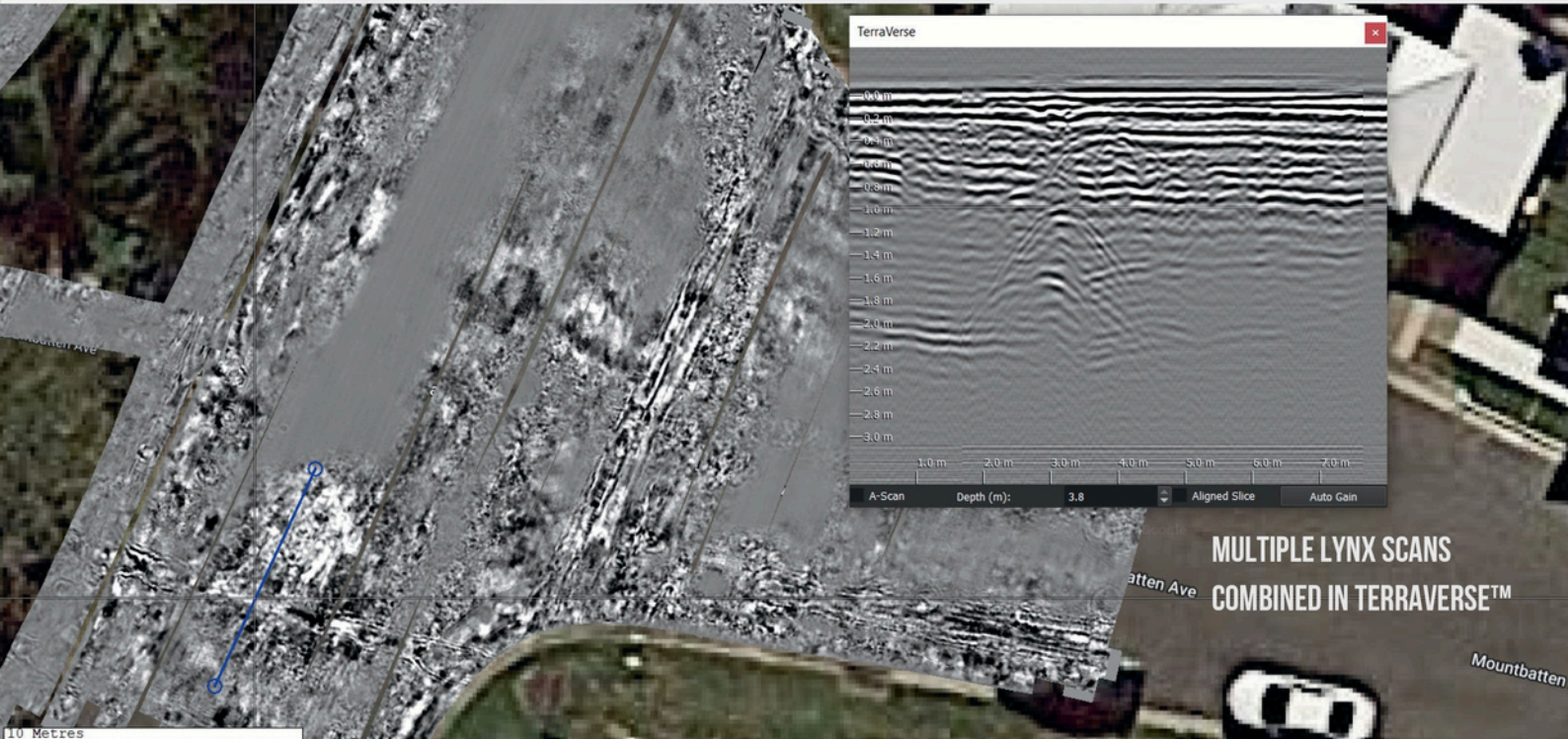
Explore your site in detail with Lynx, an advanced surface and subsurface mapping system by CodedRADAR.

Lynx seamlessly integrates 3D Ground Penetrating Radar (GPR) with synchronized surface imaging, providing a comprehensive snapshot of features both above and below the ground across sites of any size. Tailored for scanning diverse areas like sidewalks, parks, pavements, carparks, and concrete slabs, Lynx excels in identifying a range of subsurface targets, including utilities, voids, tree roots, pavement layers, and rebars.

Its 3D capabilities simplify asset identification, allowing easy differentiation between targets of interest and irrelevant reflectors like rocks—a substantial improvement over 2D GPR.

TerraVerse™ software further streamlines the process by effortlessly combining GPR and surface imagery from multiple scans into large, geospatially-corrected data mosaics. This facilitates holistic and detailed analysis, along with efficient tagging of site features.





**MULTIPLE LYNX SCANS
 COMBINED IN TERRAVERSE™**

Attribute	Details
GPR control unit:	Mini NM-GPR V1.1 (2 Tx + 4 Rx)
Array type & no. GPR channels:	Dual-polarity: 32 (16 H-H + 16 V-V) Single-polarity: 16 H-H
Ant. freq. range:	~ 385 MHz–2.1 GHz
Penetration:	Up to 3.0 m (material dependent)
Operating speed:	Dual polarity: ~5km/hr Single-polarity: ~20km/hr
Dimensions: (array; folded cart)	Array: 120 x 42.3 x 9.7cm(excl. handles). Cart: 103 x 46 x 68 cm
Weight:	Array: 20.2 kg. Cart 27.4kg (incl. camera) or 35.9 kg frame incl. camera, monitor, keyboard, batteries, lights, RTK-GPS.
Positioning:	Rotary encoder, RTK-GNSS, total station [†] , IMU.
IP Rating:	Array: IP64; Sync module: I65; Monitor: IP5X
Standard inclusions:	Mini NM-GPR digitizer + array; push-cart frame incl. sync module with embedded PC; RTK-GPS antenna with Bluetooth; portable monitor & keyboard; Earth-Control software (collection/ playback)
Optional extras:	TerraVerse™ software; Surface imaging camera + LED lighting array; push-assist; travel batteries; 3-way environmental camera module; IMU

- Noise-Modulated GPR (NM-GPR) technology for superior subsurface data resolution & penetration
- Synchronized 3D GPR & continuous surface imagery capture for direct surface-subsurface comparisons
- Dual or single polarity arrays
- Combine multiple scans to analyze vast areas quickly & easily using TerraVerse™ analysis software
- Use RTK-GNSS, grid scanning, or robotic total station positioning[†]
- Removable lighting array for nighttime surface imaging
- Embedded PC for reliable data capture & consistent operation
- Push-assist option
- Pushcart folds & stows for easy travel; lightweight array
- Camera stows within cart, remove lighting array without tools
- Reduced-capacity travel batteries*