

## Our Companies

For over 40 years, Mount Sopris Instrument has delivered borehole logging systems to drillers, miners, engineers & researchers in over 120 countries.

For over 25 years, Advanced Logic Technology has grown to become a globally recognized leader in the design of borehole televiewers, data acquisition systems & WellCAD™ processing software.

We aspire to be a market leader in the innovation, quality, accuracy and dependability of our borehole geophysics solutions.

With an extensive line of products, and industry leading customer support, we are dedicated to the success of our customers!

## Our instruments and software are used for

- . Engineering & Geotechnical projects
- . Mining & Mineral exploration
- . Groundwater applications
- . Oil & Gas & Geothermal



Mount Sopris Instrument Co.  
4975 East 41st Avenue  
Denver, Colorado 80216  
USA  
T. +1 303 279 3211  
sales@mountsopris.com

[www.mountsopris.com](http://www.mountsopris.com)



ALT headquarters  
Zoning de Solupla 30H  
route de Niederpallen  
L-8506 Redange  
Luxembourg  
T. +352 23 649 289

ALT Asia

36th Floor, Menara Maxis  
Kuala Lumpur City Centre  
50088 Kuala Lumpur  
Malaysia  
T. +60 3 2615 7261  
info@alt.lu

[www.alt.lu](http://www.alt.lu)

©2018, Mount Sopris and Advanced Logic Technology s.a.  
all rights reserved.

# Borehole Logging Instruments & Software



## Stackable wireline probes

- . Acoustic & Optical Televiewer
- . Full Waveform Sonic
- . Natural and Spectral Gamma
- . Normal Resistivity
- . Induced Polarization
- . Dual Laterolog
- . Dual Induction
- . Formation Density
- . Neutron –Thermal Neutron
- . Flowmeter (Spinner & Heat Pulse\*)
- . Fluid Temperature & Conductivity
- . Water Quality & Sampler\*
- . 3-arm Caliper
- . Magnetic Susceptibility
- . Borehole Deviation



\*Non stackable probes

## Examples of applications in mining, groundwater & engineering

- . Lithology identification
- . Mineral exploration
- . Stratigraphy and bed thickness
- . Permeable zones and porosity
- . Locations of aquifers / aquitards
- . Water quality and contamination
- . Density
- . Fluid flow measurements
- . Detection of weathered, fractured and permeable zones
- . Fracture identification and orientation
- . Core orientation
- . Local stress (borehole breakout orientation)
- . Rock strength and elastic parameters
- . Coal quality
- . Cased hole integrity/ cementation

## Versatile data acquisition systems

SCOUT, MATRIX and OPAL offer the unique combination of high performance, ruggedness and ease of use.

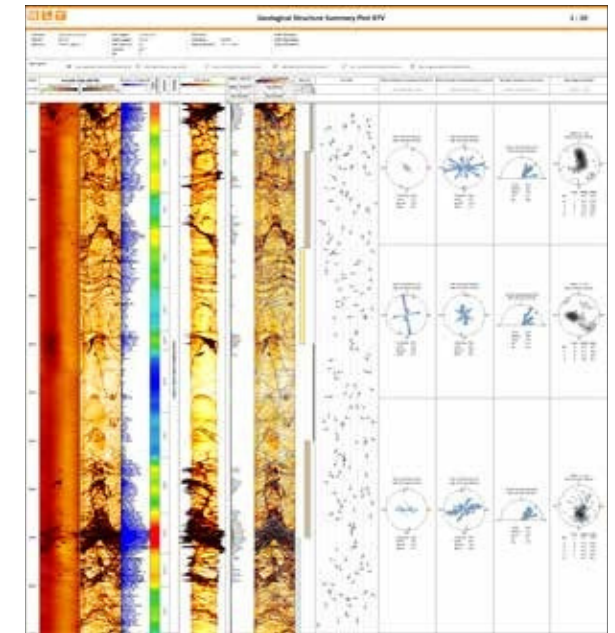
## Logging winches

- \* Cable length capacity up to 2500m
- . Portable and truck mounted
- . Single, multi-conductor or coax cable



## WellCADTM Software

WellCADTM handles the entire data loading, log editing, analysis and presentation workflow for drilling, wellsite, core and logging data - independent of the industry sector. The modular architecture of WellCADTM allows users to easily activate advanced modules to build a package tailored to their requirements and make it an attractive solution for small scale companies as well as large multinational corporations.



Complete Instrumentation Solutions Private Limited,  
Suite #512, Suncity Business Tower, Golf Course Road,  
Sector-54, Gurgaon-122002, Haryana Tel: 0124-4929000  
(E) info@instrumentation-solutions.com  
(W) www.instrumentation-solutions.com